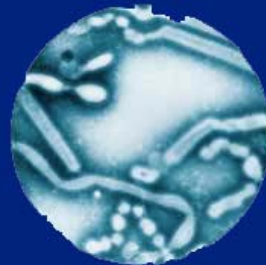


Planning for Pandemic Influenza



What is pandemic influenza?

- Occurs when a *new* influenza A virus emerges
- Causes serious illness because of *little to no immunity* in humans
- *Spreads easily* from person to person



A pandemic is a global disease outbreak.



How likely is a Flu Pandemic?



- "...Pandemic Flu is our biggest worldwide challenge," according to the U.S. Centers for Disease Control and Prevention (CDC)
- A flu pandemic will mostly likely happen in the next few years



Have we ever had a Flu Pandemic?

- **1918-1919 "Spanish Flu"**
 - Spread around the world in four to six months
 - At least 40-50 million people died worldwide
 - 600,000 deaths in the United States
- **1957-1958 "Asian Flu"**
 - At least 1.5 million people died worldwide
 - 70,000 deaths in the United States
- **1968-1969 "Hong Kong Flu"**
 - At least 700,000 people died worldwide
 - 34,000 deaths in the United States



- **A typical flu season**
 - 36,000 deaths in the United States



What is Avian Flu (Bird Flu)?

- Avian flu is an infection caused by avian (bird) influenza (flu) viruses
- Influenza viruses occur naturally among birds. Wild birds carry the virus in their intestines, but usually do not get sick from them
- Avian flu is very contagious among birds and can make some domestic birds, including chickens, ducks and turkeys, very sick and kill them



Avian Flu in Humans

- Does not normally infect humans
- Most human cases of avian flu in humans are from direct contact with infected poultry (chickens, ducks and turkeys)
- Little human to human transmission





Current Outbreak of Avian Flu

- Current poultry outbreaks of avian influenza began in South East Asia in mid-1997. They are the largest and most severe on record.
- Caused by the highly pathogenic H5N1 virus.
- Outbreaks have occurred throughout the countries of Asia, Europe, the Near East and Africa.



Food Safety



- Eating properly handled and cooked poultry and eggs is safe
- Cook poultry to an internal temperature of at least 165° F
- Poultry products imported into the United States must meet all safety standards
- No poultry from countries with confirmed bird flu (H5N1) can be imported into the United States



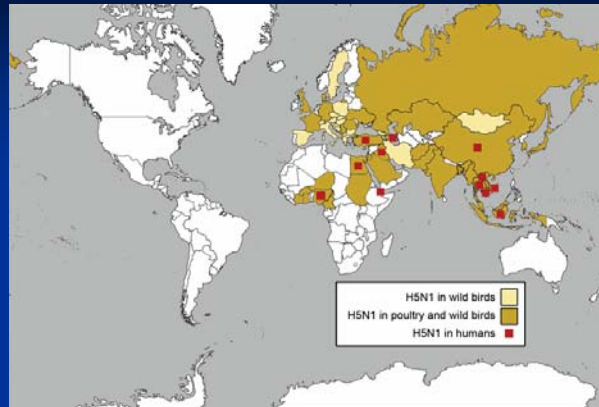
World Health Organization (WHO) Phase of Pandemic Alert

Current Phase of WHO Pandemic Alert, 2006.

Phases	Phase Description	Level
Inter-Pandemic Phase	Low Risk of Human Cases	1
New Virus in Animals, No Human Cases	Higher Risk of Human Cases	2
Pandemic Alert	No or Very Limited Human-to-Human Transmission	3
New Virus Causes Human Cases	Evidence of Increased Human-to-Human Transmission	4
	Evidence of Significant Human-to-Human Transmission	5
Pandemic	Efficient and Sustained Human-to-Human Transmission	6



Current Outbreak of Avian Flu in the world



Pandemicflu.gov

As of June 29, there were **317** human cases and **191** deaths in Azerbaijan, Cambodia, China, Djibouti, Egypt, Indonesia, Iraq, Lao People's Democratic Republic, Nigeria, Thailand, Turkey and Vietnam.



Avian Flu

Meets two of the three criteria for a pandemic:

- H5N1 is a new virus for humans
- It causes serious illness
- It does NOT meet the criteria of being easily spread from human to human

Currently there is no pandemic flu in the world.



How will Avian Flu travel to the United States?

- Migratory birds
- Illegal smuggling of birds and poultry products
- Travel by infected people
- People traveling with virus-contaminated materials



Seasonal Flu Transmission



- Spread by germs from coughing, sneezing, talking and contact with infected surfaces
- Typical incubation period: 2 days
- People may be contagious one day before symptoms, highest in first several days



Avian Flu in Humans

What are the symptoms of avian flu in humans?

- Typical flu-like symptoms (fever, sore throat, cough)
- Quickly turns into serious lung disease, pneumonia and/or respiratory distress



Impact of a Pandemic *Health Care*

- Health care facilities will be overwhelmed. Illness rates will soar – many people will require some form of medical care
- Symptoms may be severe and complications more frequent. Healthy people may be at an increased risk for complications



Impact of a Pandemic *Health Care*



- Limited to no assistance from state and federal governments due to nationwide impact
- Vaccine will probably not be available in the early stages of a pandemic, and when vaccine is available the need will out number the supply



Medical Treatment During a Pandemic

- Antiviral Agents
 - Can prevent complications if taken in time
 - May not be effective against a pandemic virus
 - Supplies at this time are extremely limited
 - Resources would be prioritized base on national guidance



Preparing for the Pandemic

- Role of Public Health
 - Limit illness & death
 - Preserve continuity of government, business and organizational operations
 - Minimize social disruption & economic loss
 - Facilitate recovery



Role of Local Health Department *Plan and Prepare*

- Build on National and State plans/guidance
- Working **Pandemic Influenza Response Plan** for Columbus and Franklin County
- Health Department Operations Centers activated in an emergency
- Planning with Health Care Providers and Hospitals for Mass Care and Mass Casualties



Role of Local Health Department *Surveillance and Tracking*



- Early warning systems
 - Abstrac (schools)
 - RODS (emergency rooms)
 - OTC (community)
- Communicable Disease Reporting System (CDRS)



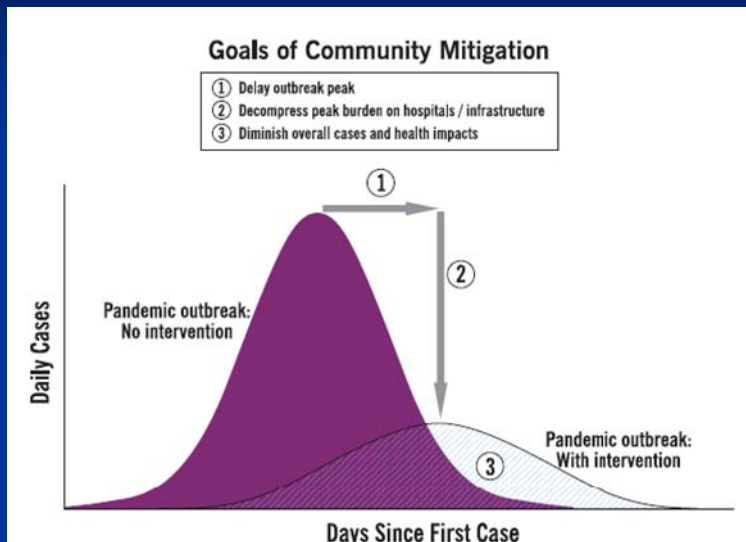
Role of Local Health Department *Limiting the Spread*



- Isolation and Quarantine
- Social Distancing
- Closing Places of Assembly
- “Snow Days or Weeks” and/or sending home non-essential workers



Strategy Effectiveness



Role of Local Health Department *Vaccine and Pharmaceutical Delivery*

- Mass Vaccination Clinics
- Trained Nurses and Public Health Staff
- New Technology
- “First to Receive” Plans



Impact of a Pandemic *Social and Economic*

- Travel bans, closings of schools and businesses and cancellations of events could have a major impact on communities and citizens.
- Rates of absenteeism will depend on the severity of the epidemic, but could be as high as **40 percent** during the peak weeks of an outbreak.



Preparing for the Pandemic *What can you do now?*



- Create a pandemic plan, both for your business and family
- Follow directions from “Ready in 3”



Business Planning *Continuity of Operations Planning*

- Identify key functions
- Cross train staff
- Identify telecommuting opportunities
- Review HR policies (sick leave)
- Identify ways to maintain payroll functions
- Make alcohol gel and disinfectant wipes available



Business Planning *Infection Control Strategies*



- Clean common areas with disinfectant
- Provide anti-bacterial gel and wipes for all employees
- Wash hands frequently



Business Planning *Social Distancing Strategies*

- Avoid face-to-face meetings
- Sit at least three feet away from others
- Avoid crowded common areas (i.e. lunch rooms, public transportation, restaurants, etc.)



Personal Planning

- Practice good hygiene
 - Wash hands for 15 to 20 seconds or sing happy birthday twice
 - Cough and sneeze into a sleeve or a tissue. Throw the tissue away immediately
 - Avoid touching your eyes, nose and mouth
 - Avoid close contact with those that are sick



Get Your Seasonal Flu Vaccine

- Though seasonal flu vaccines do not protect you against a pandemic flu, it will help prevent contracting both flu viruses at the same time



Helpful Pandemic Flu Resources

- Central Ohio Pandemic Flu
 - www.columbuspandemicflu.com
- Ohio Pandemic Flu
 - www.ohiopandemicflu.gov
- United States Pandemic Flu
 - www.pandemicflu.gov
- Franklin County Board of Health
 - www.franklincountyohio.gov/health
- Columbus Public Health
 - www.publichealth.columbus.gov
- Cough Safe Video
 - www.coughsafe.com

